



City of Mount Clemens Water Service Request

May 22, 2024

Jody Caldwell, P.E., Chief Planning Officer

Chandan Sood, Water Analytics, Planning & Metering Director

Key Take-Aways

- ◆ Due to significant investment needs within the City of Mount Clemens' existing water treatment facility, it has engaged GLWA to provide water service
- ◆ Multiple connection points are planned that will provide redundancy for the City and meet its level of service needs
- ◆ Current design requires no GLWA capital investment
- ◆ Reduces impact of revenue requirement increases on GLWA wholesale charges by spreading system-wide costs across a broader user base
- ◆ GLWA's System Optimization Guidelines indicate adding the City as a Member Partner is a favorable prospect

Background: New GLWA Water Service for the City of Mount Clemens

- 💧 The City identified significant improvements necessary to its water treatment plant
- 💧 The City requested GLWA provide a service proposal in July 2022
- 💧 GLWA presented to the City Council in October 2022
- 💧 Initially, the City decided to rehabilitate its facilities, instead of contracting with GLWA
- 💧 In 2023, when the City did not receive a Drinking Water State Revolving Fund loan due to its proximity to the GLWA service area, the City and GLWA began planning and design meetings

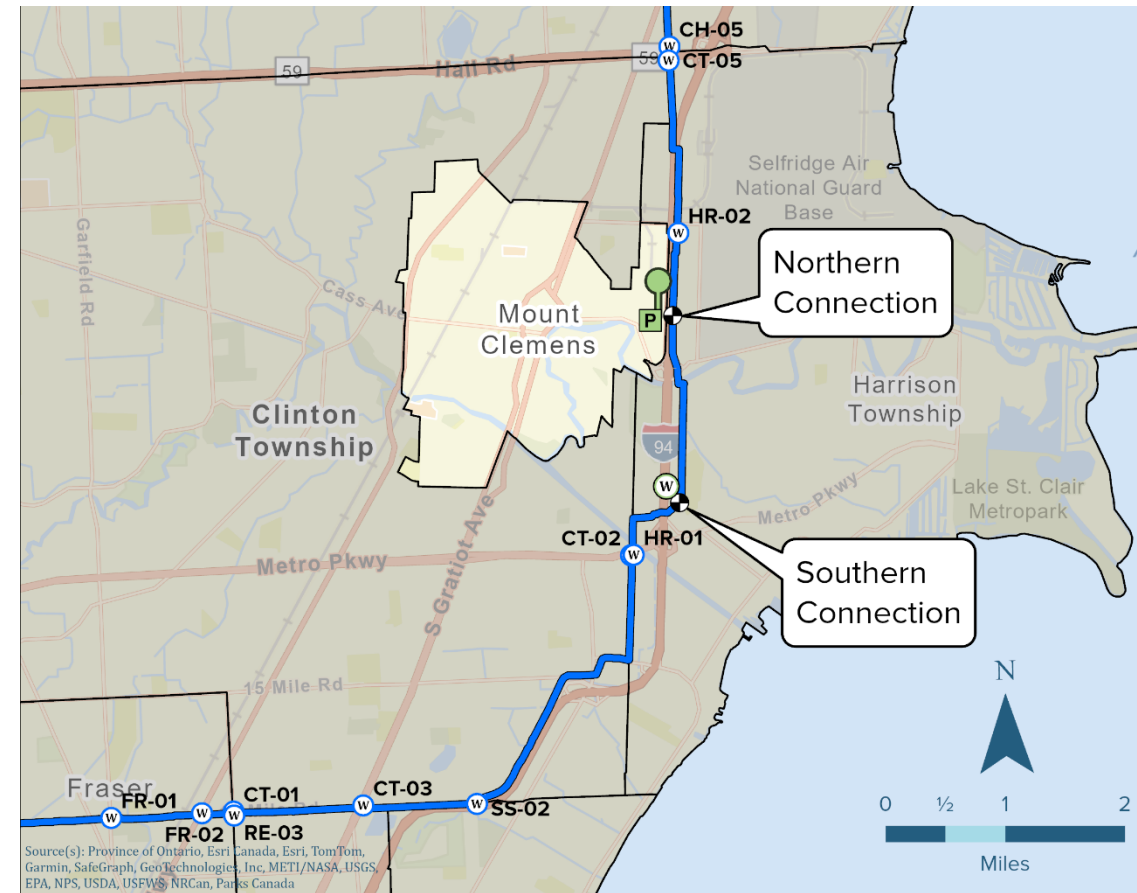
Mount Clemens Water Infrastructure Needs for Redundancy

Construct:

- Two connections to GLWA's 42inch transmission main
- 5,100 feet of distribution main
- Storage tank, pump station, meter facilities, pressure reducing valves

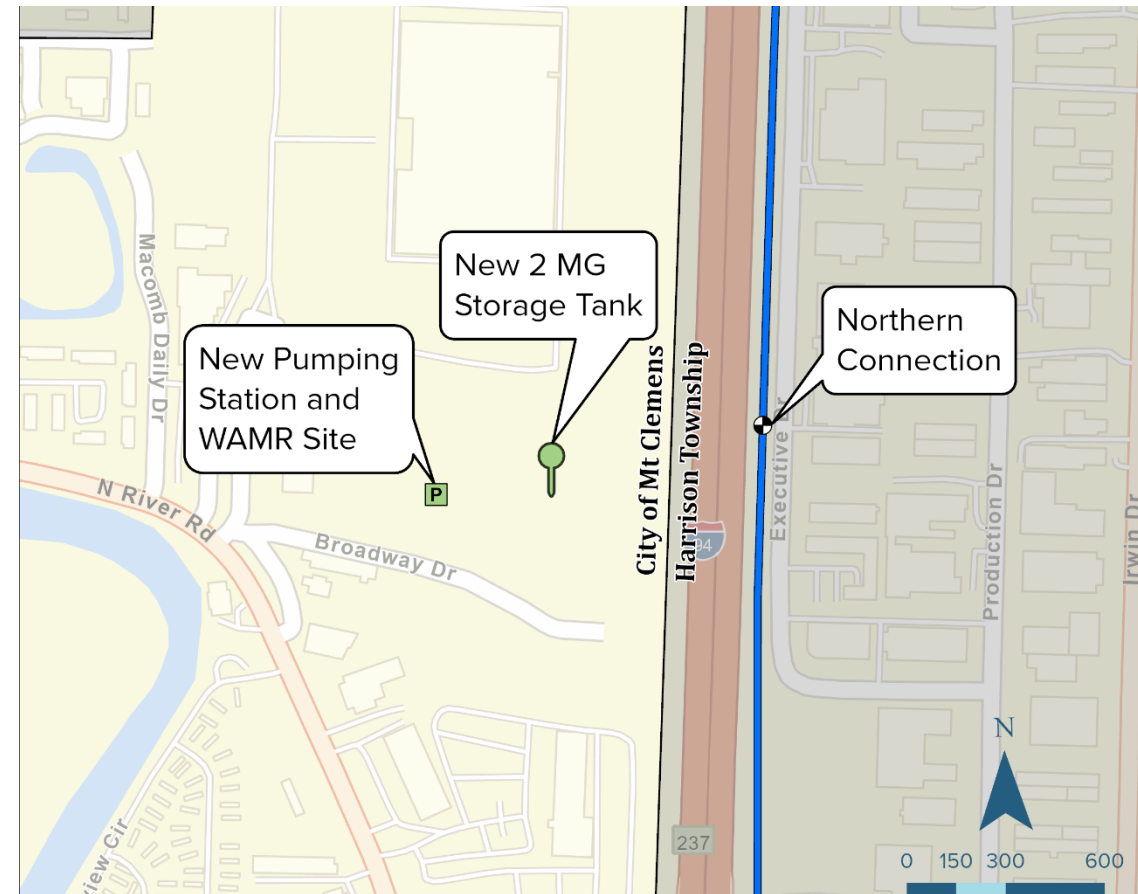
Abandon:

- 3.3 miles of City-owned water main
- City-owned water treatment facility and intake pipeline



Northern GLWA Connection (Primary)

- 💧 Purpose: To provide the primary water service feed to the City
- 💧 Infrastructure Needs:
 - 💧 Tap to the 42-inch transmission main
 - 💧 4,200 feet of 20-inch water main
 - 💧 Pump station with GLWA-owned meter facility
 - 💧 Two-million-gallon ground storage tank

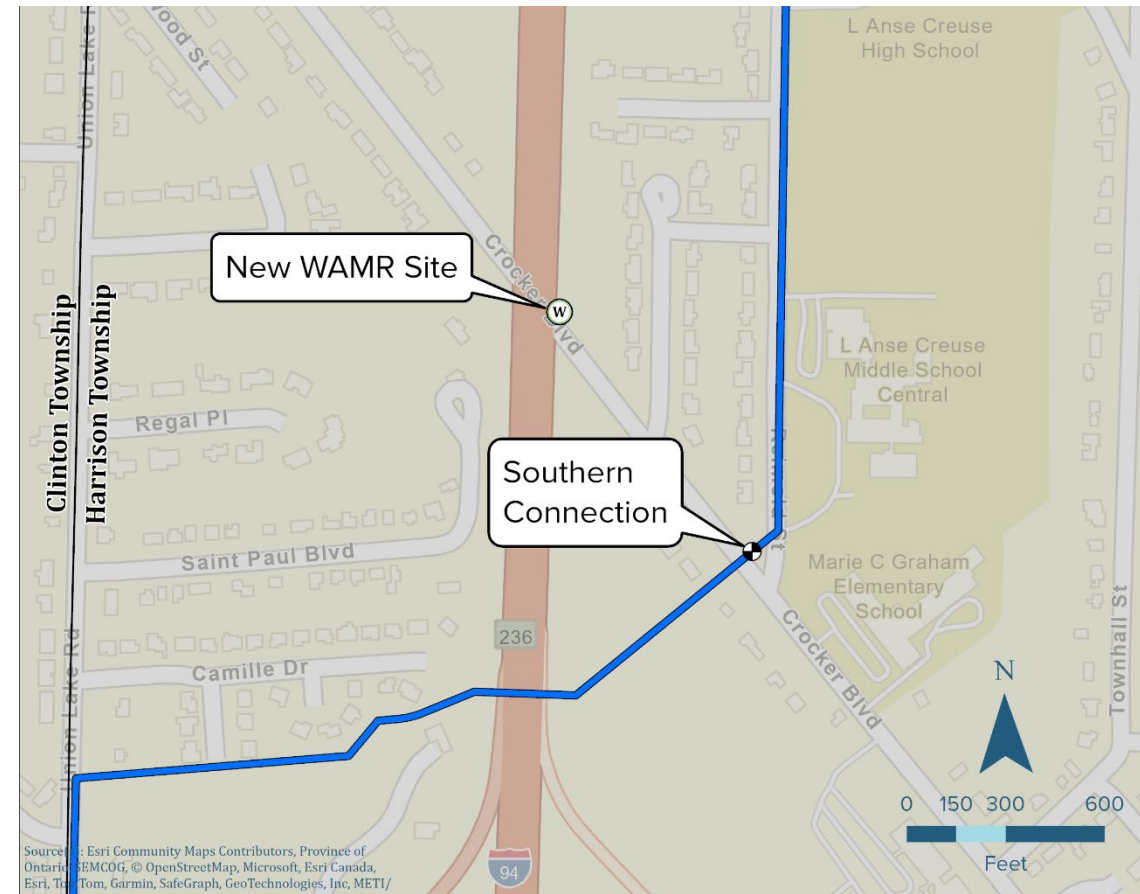


Southern GLWA Connection (Redundant)

💧 Purpose: To provide a redundant feed for the City in the event of a transmission main disruption to the northern connection

💧 Infrastructure Needs:

- 💧 Tap to the 42-inch transmission main
- 💧 900 feet of 16-inch water main
- 💧 Meter chamber and by-pass
- 💧 Pressure reducing valve chamber



Mount Clemens Projected Demands & Schedule

- 💧 The City will be required to execute GLWA's model water service contract prior to water service delivery
- 💧 Initial contract conversations have occurred, however planning and design were identified as critical path items

Mount Clemens Demands	2025	2040
Average Day (MGD)	2.17	2.25
Maximum Day (MGD)	4.72	4.90
Peak Hour (MGD)	7.08	7.35

Task Schedule	Due Date
Issue Request for Proposals	April 30, 2024
Proposals Due	June 21, 2024
Design-Build Contract Execution	July 16, 2024
Notice to Proceed	October 1, 2024
Design and Permitting	July 11, 2025
Construction and Performance Testing	August 30, 2028

GLWA System Optimization Guidelines

💧 *Impact on water quality*

- 💧 No water quality impacts are anticipated to the GLWA water system
- 💧 A water quality transition plan and testing is required by EGLE to transition the City and several Harrison Township customers from the current water treatment system to the GLWA water system

💧 *Impact on service reliability*

- 💧 None

💧 *Impact on existing GLWA member partners*

- 💧 Hydraulic modeling performed with the City's anticipated demands has no impact to other GLWA contract pressures and flows

GLWA System Optimization Guidelines (Cont'd)

💧 *Ability to leverage the use of existing system assets*

- 💧 No new GLWA infrastructure is needed because GLWA's water system runs adjacent to the City for approx. two miles and excess water treatment and pumping capacity exist in the GLWA system
- 💧 Additional member partners (and water use) provides a better alignment of actual demands to rated water treatment/pumping capacity

💧 *Interface or concurrence with planning documents*

- 💧 Goal of water master plan: “Focus on actions that result in cost efficiency, maximizing use of existing assets, and improving reliability, and long-term financial sustainability”
- 💧 The plan also discusses the need for marketing, incentivizing, identifying and facilitating the development of new wholesale customers

GLWA System Optimization Guidelines (Cont'd)

💧 *Impact on long-term financial stability of the GLWA system*


- 💧 Providing service to a new wholesale water customer with no capital investment and minimal ongoing financial expense (i.e., meter facilities operation & maintenance)
- 💧 Reduces the impact that revenue requirement increases have on wholesale charges by spreading system-wide costs across a broader user base

💧 *Benefits to the region*

- 💧 Utilization of existing resources
- 💧 Assists the City with their water challenges
- 💧 Spreads GLWA system-wide costs across a broader user base

Key Take-Aways

- ◆ Due to significant investment needs within the City's existing water treatment facility, it has engaged GLWA to provide water service
- ◆ Multiple connection points are planned that will provide redundancy for the City and meet its level of service needs
- ◆ Current design requires no GLWA capital investment
- ◆ Reduces impact of revenue requirement increases on GLWA wholesale charges by spreading system-wide costs across a broader user base
- ◆ GLWA's System Optimization Guidelines indicate adding the City as a Member Partner is a favorable prospect

A dynamic background image featuring a horizontal splash of clear water with numerous bubbles and droplets, set against a light blue gradient. The water appears to be moving from left to right, creating a sense of motion and freshness.

Thank You
Questions, Answers & Discussion