



Cheryl Porter
Chief Operating Officer
Water and Field Services
735 Randolph Street, Suite 1900
Detroit, Michigan 48226
Phone: 313-964-9390

Memorandum

**To: Director Brian Baker
Honorable Board of Directors
Great Lakes Water Authority**

From: Cheryl Porter, COO – Water and Field Services

CC: Executive Leadership Team

Date: November 16, 2020

**RE: Response to Director Brian Baker’s Question regarding Number of Sensors -
Contract No. 2003901 “Regional River Water Quality Monitoring Program”**

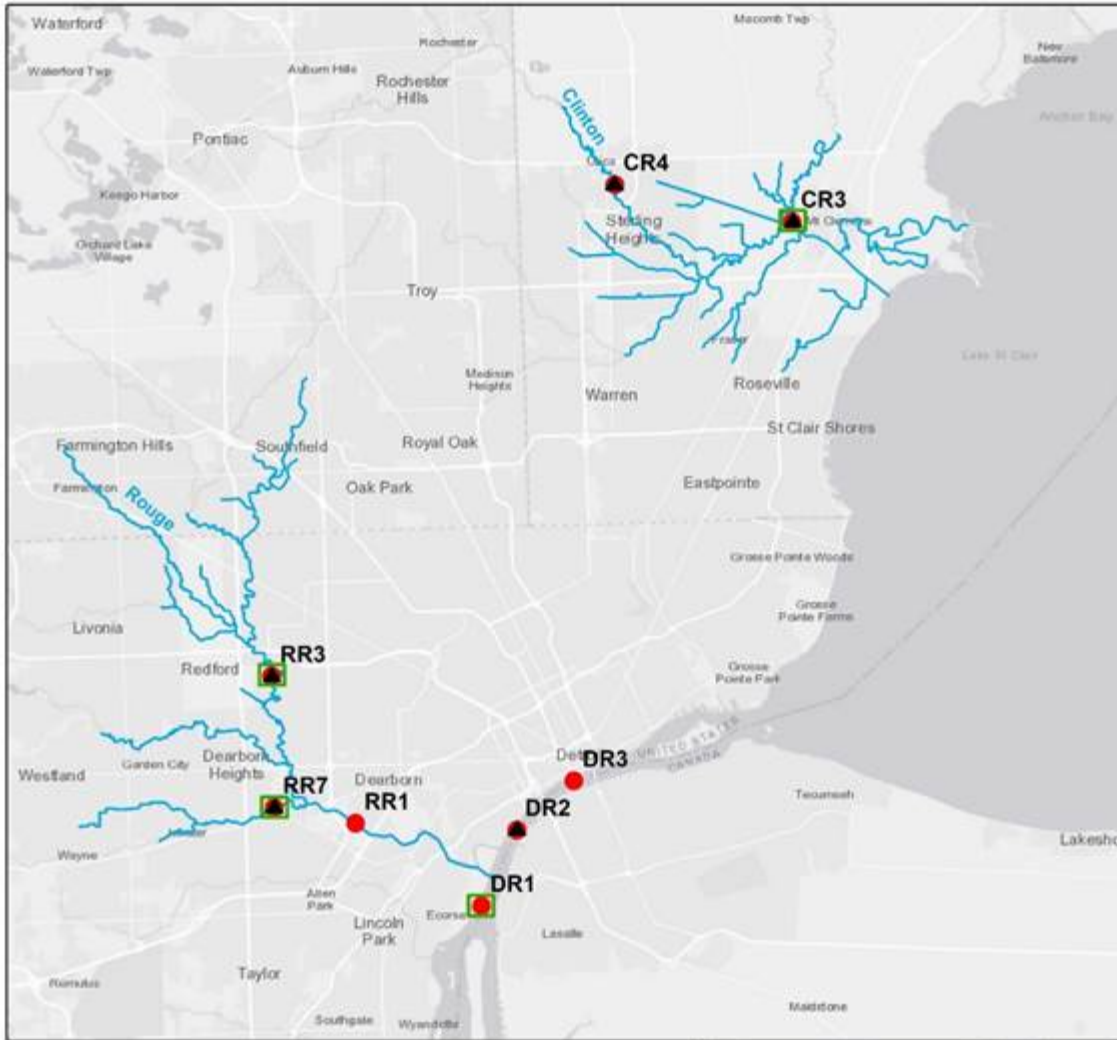
This memorandum is in response to the question raised by Director Brian Baker at the November 12, 2020 Operations and Resources Committee Meeting regarding the number of sensors for Contract No. 2003901 “Regional River Water Quality Monitoring Program.

The project involves sampling and/or installing sensors at two locations on the Clinton River and three locations each on the Rouge and Detroit Rivers for a total of eight monitoring locations (*See diagram on page 2*).

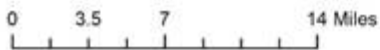
All eight of these locations will have monthly water quality sampling conducted by USGS.

In addition, flow and depth will be measured continuously at 5 locations (2 Clinton, 2 Rouge, 1 Detroit). At four of these five locations, temperature, pH, specific conductance, dissolved oxygen (DO), and turbidity will be measured at 15-minute intervals (1 Clinton, 2 Rouge, and 1 Detroit). Finally, nutrient sampling will also be conducted at these four locations.

Therefore, a total of 5 flow and levels sensors and 4 multi-parameter probe sensors measuring temperature, pH, specific conductance, DO, and turbidity, will be installed and maintained as part of this work.



Service Layer Credits: Esri, HERE, Garmin, (c) OpenStreetMap contributors, and the GIS user community
 Esri, HERE, Garmin, © OpenStreetMap contributors, and the GIS user community



Explanation	
●	GLWA Sampling Location
▲	Continous Stream Gage
	High Frequency Sampling

