



Water & Field Services at Work

SPW July 15, 2020

Leak

EOC Update



Before Photos

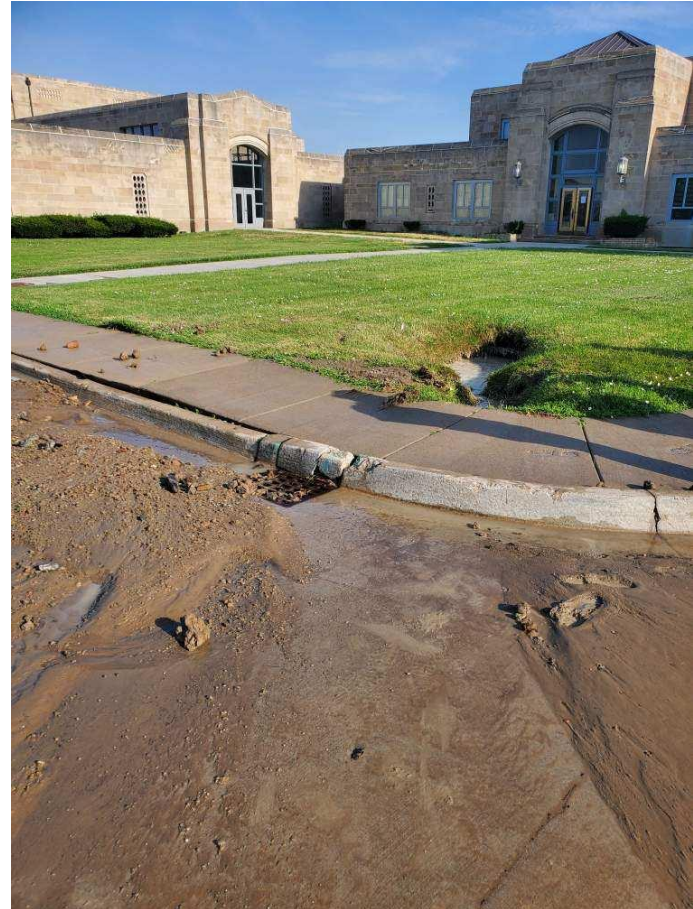
Water Operation Isolation



Leak Identified (Internal and External) – 9am basement of SPW Admin Building



Damage from a 24-inch main



After Photos

*Field Services called in for
the repair*



Isolated leak – start of the repair 1pm

The digging begins ...



The 24-inch main exposed



Attaching the new main



The connection between old and new

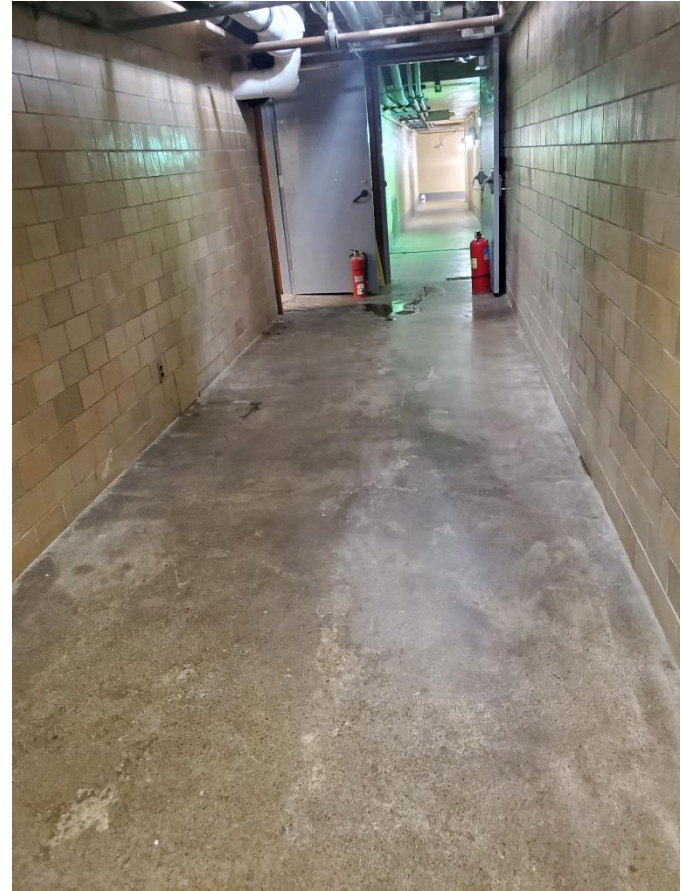
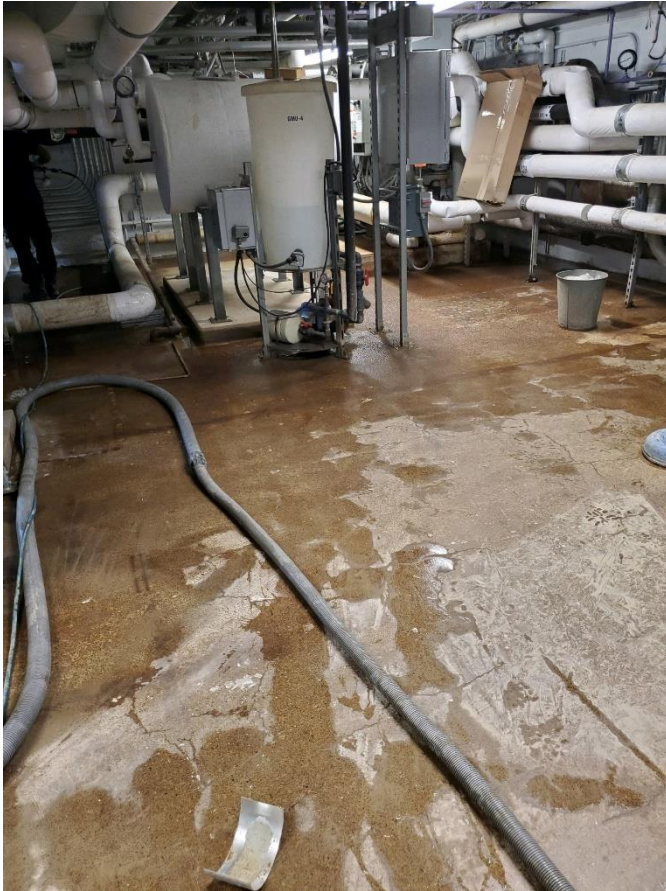


Recovery

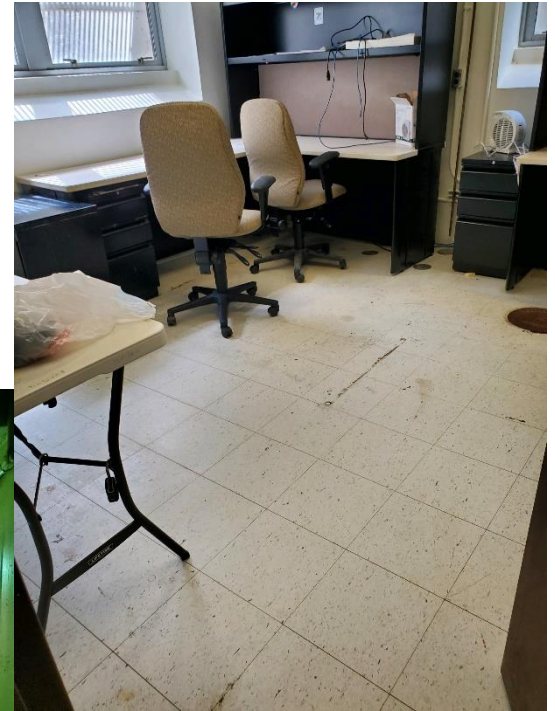
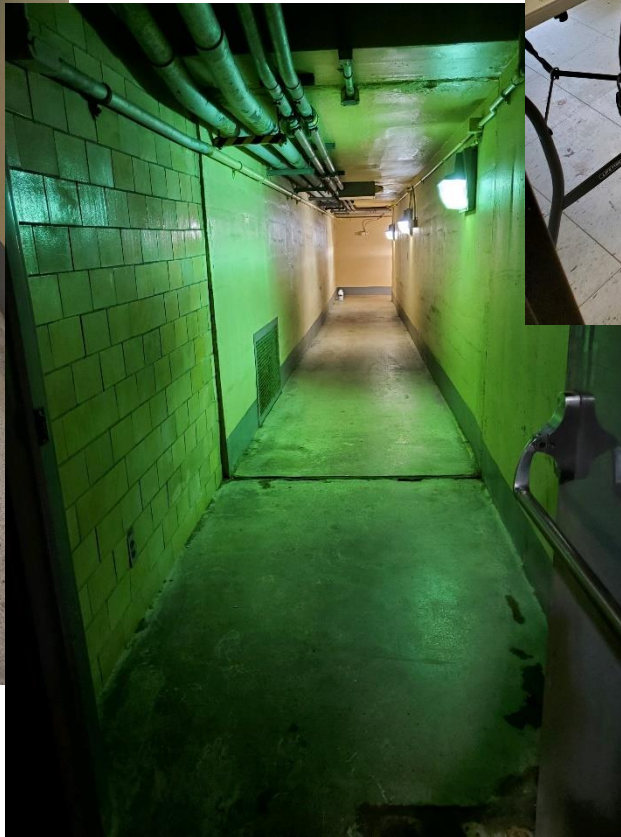
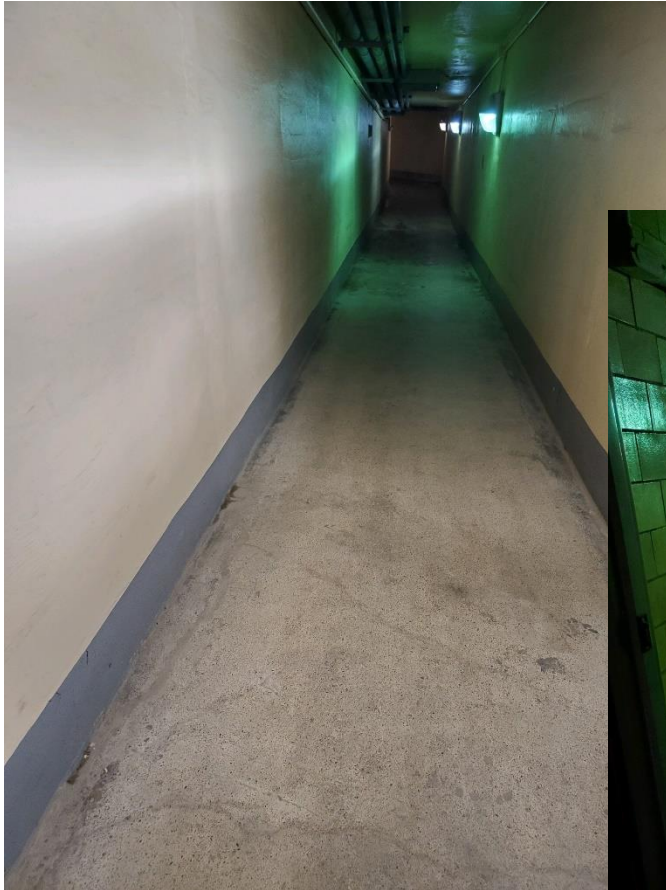
*Fleet & Facilities for the
clean-up*



Back to normal



Back to normal





GLWA

Great Lakes Water Authority

One Water One Team