



## 2017 GLWA “ONE WATER” PARTNERSHIP - 09/28/17

<p><i>City of Allen Park</i></p> <p><i>Village of Almont</i></p> <p><i>Ash Township</i></p> <p><i>City of Belleville</i></p> <p><i>Berlin Charter Township</i></p> <p><i>Brownstown Township</i></p> <p><i>Bruce Township</i></p> <p><i>Burtchville Township</i></p> <p><i>Canton Township</i></p> <p><i>City of Center Line</i></p> <p><i>Chesterfield Township</i></p> <p><i>Clinton Township</i></p> <p><i>Commerce Township</i></p> <p><i>City of Dearborn</i></p> <p><i>City of Dearborn Heights</i></p>	<p style="text-align: center;"><b>1. PURPOSE</b></p> <p>1.1 The Great Lakes Water Authority (“GLWA”) and its undersigned members, as defined below, enter into this commitment for the purpose of continuing, strengthening and improving a long-term partnership based on the critical success factors of mutual trust, collaboration, respect, and open and honest communication for the benefit of the public and all signatories to this commitment.</p> <p style="text-align: center;"><b>2. MEMBERSHIP</b></p> <p>2.1 The members of this partnership include GLWA, its staff and Board of Directors, and all GLWA wholesale customers (“Customers”), the City of Detroit (“Detroit”), the Michigan Department of Environmental Quality (“MDEQ”), the Southeast Michigan Council of Governments (“SEMCOG”), and consultants representing any of the foregoing members (collectively, “Members”).</p> <p style="text-align: center;"><b>3. MISSION STATEMENT</b></p> <p>3.1 To collaboratively ensure a One Water system approach to our regional water and wastewater system that will be economically, socially and environmentally responsible and sustainable.</p> <p style="text-align: center;"><b>4. MEMBER RESPONSIBILITIES</b></p> <p>4.1 Members are responsible for providing information generated by and through this partnership to community and organizational stakeholders and clients, as appropriate.</p> <p>4.2 Members are responsible for making contributions to work groups and the timely completion of assignments that they have agreed to accept.</p> <p>Members will abide by and actively support the following rules of collaboration:</p> <ul style="list-style-type: none"> <li>a. Show mutual respect for each Members’ point of view.</li> <li>b. Balance the needs of your individual community or entity with the interests of the system as a whole.</li> <li>c. Work toward consensus on each issue. “Consensus” means an opinion held by all or most of the partnership and/or work group, which is supported by a show of hands.</li> </ul>	<p><i>City of Detroit</i></p> <p><i>City of Eastpointe</i></p> <p><i>City of Ecorse</i></p> <p><i>City of Farmington</i></p> <p><i>City of Farmington Hills</i></p> <p><i>City of Ferndale</i></p> <p><i>City of Flat Rock</i></p> <p><i>City of Fraser</i></p> <p><i>City of Garden City</i></p> <p><i>City of Gibraltar</i></p> <p><i>GLWA</i></p> <p><i>Grosse Ile Township</i></p> <p><i>City of Grosse Pointe</i></p> <p><i>City of Grosse Pointe Farms</i></p> <p><i>City of Grosse Pointe Park</i></p> <p><i>Village of Grosse Pointe Shores</i></p>
---	---	---



## 2017 GLWA “ONE WATER” PARTNERSHIP - 09/28/17

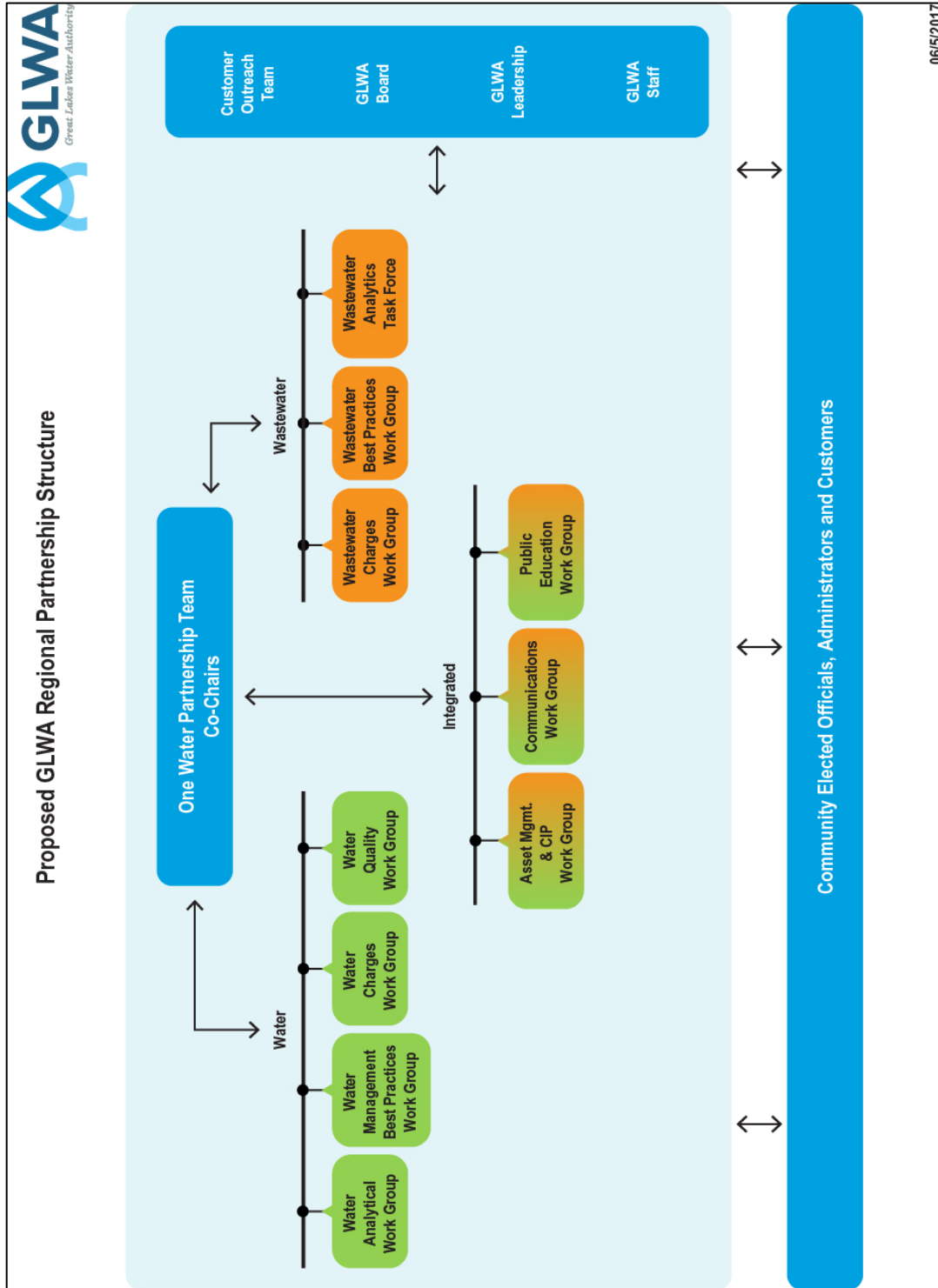
<p><i>City of Grosse Pointe Woods</i></p> <p><i>City of Hamtramck</i></p> <p><i>City of Harper Woods</i></p> <p><i>Harrison Township</i></p> <p><i>City of Hazel Park</i></p> <p><i>City of Highland Park</i></p> <p><i>Huron Township</i></p> <p><i>City of Imlay</i></p> <p><i>Imlay Township</i></p> <p><i>City of Inkster</i></p> <p><i>City of Keego Harbor</i></p> <p><i>City of Lapeer</i></p> <p><i>Lenox Township</i></p> <p><i>City of Lincoln Park</i></p> <p><i>City of Livonia</i></p> <p><i>Macomb Township</i></p>	<p>d. Enter each meeting with a willingness to acknowledge your own personal bias to encourage and maintain a collaborative working environment.</p> <p>e. Respect individual concerns and needs as each Member is unique.</p> <p>f. Be proactive and take initiative in raising issues and providing recommendations prior to, during, and after meetings.</p> <p><b>5. CUSTOMER OUTREACH</b></p> <p>5.1 To facilitate the effective conduct of the partnership, GLWA will maintain and manage a Customer Outreach program. This program will include a contracted third-party facilitator responsible for ensuring and sustaining the rules of collaboration within the partnership and furthering the transparent exchange of financial, programmatic, and technical information between GLWA and its Members. The third-party facilitator will have access to all Members of the partnership including GLWA leadership, staff and its Board of Directors, as appropriate.</p> <p><b>6. PARTNERSHIP ORGANIZATION AND PROCESS</b></p> <p>6.1 The One Water Partnership (formally known as the water Technical Advisory Committee and wastewater Steering Committee) will conduct facilitated quarterly meetings.</p> <p>6.2 The One Water Partnership co-chairs shall be selected or elected in accordance with the partnership bylaws.</p> <p>6.3 The co-chairs will develop the agenda for each quarterly meeting, in collaboration with the GLWA customer outreach program, GLWA executive staff, and the third-party facilitator.</p> <p>6.4 Each work group will communicate progress updates, recommendations and requests to GLWA leadership, staff and its Board of Directors to enable communication between all Members.</p> <p>6.5 Members will identify and organize work groups to further the mission of the partnership. The work groups existing as of September 28, 2017, are identified in the attached Exhibit A.</p>	<p><i>City of Madison Heights</i></p> <p><i>Mayfield Township</i></p> <p><i>MDEQ</i></p> <p><i>MDOT</i></p> <p><i>City of Melvindale</i></p> <p><i>Village of New Haven</i></p> <p><i>NOCWA</i></p> <p><i>City of Northville</i></p> <p><i>Northville Township</i></p> <p><i>City of Novi</i></p> <p><i>City of Oak Park</i></p> <p><i>Oakland County</i></p> <p><i>Oakland-Macomb Interceptor District</i></p> <p><i>City of Plymouth</i></p> <p><i>Plymouth Township</i></p>
---	--	--



## 2017 GLWA “ONE WATER” PARTNERSHIP - 09/28/17

<p><i>Redford Township</i></p> <p><i>City of River Rouge</i></p> <p><i>City of Riverview</i></p> <p><i>City of Rockwood</i></p> <p><i>City of Romeo</i></p> <p><i>City of Romulus</i></p> <p><i>City of Roseville</i></p> <p><i>Royal Oak Township</i></p> <p><i>SEMCOG</i></p> <p><i>Shelby Township</i></p> <p><i>SOCWA</i></p> <p><i>Southgate</i></p> <p><i>Village of South Rockwood</i></p> <p><i>City of St. Clair Shores</i></p> <p><i>City of Sterling Heights</i></p> <p><i>Sumpter Township</i></p> <p><i>City of Sylvan Lake</i></p>	<p style="text-align: center;"><b>7. PARTNERSHIP GOALS</b></p> <p>7.1 To protect the public health, safety and welfare of the public served by the regional system.</p> <p>7.2 To participate in the optimization of critical GLWA business processes such as asset management, capital improvement project identification and planning, continuing education, procurement, public relations, strategic planning, and training.</p> <p>7.3 To identify and further business and technical innovations with the potential to make effective and efficient contributions to the partnership such as cooperative purchasing, joint economic development, regional training, and piloting new technologies.</p> <p>7.4 To actively participate in the development and roll out of water and wastewater charges to minimize controversy.</p> <p>7.5 To expand partnership participation to those Members who do not regularly engage in partnership activities.</p> <p>7.6 To identify and cultivate utility leaders of the future.</p> <p>7.7 To develop a multi-jurisdictional, multi-agency approach to infrastructure renewal and development.</p> <p style="text-align: center;"><b>8. WORK GROUP GOALS</b></p> <p>8.1 Work group goals shall be established annually in consultation with co-chairs and the GLWA Customer Outreach program.</p> <p>8.2 Goal progress will be tracked by the third-party facilitator and progress updates will be provided to the Members at quarterly partnership meetings.</p> <p style="text-align: center;"><b>9. PARTNERSHIP EVALUATION PROCESS</b></p> <p>9.1 Co-chairs shall, in consultation with each work group, prepare a scorecard to evaluate GLWA performance and present it to GLWA leadership at prescribed intervals.</p> <p>9.2 The Customer Outreach program shall provide written status reports to co-chairs, GLWA leadership and its Board of Directors on quarterly basis, to include an evaluation of the partnership activities.</p>	<p><i>City of Taylor</i></p> <p><i>City of Trenton</i></p> <p><i>City of Troy</i></p> <p><i>City of Utica</i></p> <p><i>Van Buren Township</i></p> <p><i>City of Walled Lake</i></p> <p><i>City of Warren</i></p> <p><i>Washington Township</i></p> <p><i>City of Wayne</i></p> <p><i>Wayne County</i></p> <p><i>West Bloomfield Township</i></p> <p><i>City of Westland</i></p> <p><i>City of Wixom</i></p> <p><i>City of Woodhaven</i></p> <p><i>YCUA</i></p>
--	---	---

Exhibit A



September 28, 2017 – One Water Partnering Agreement

NAME	ORGANIZATION
Cheryl Foster	GLWA
Christopher A. DuBay	City of Hazel Park
Pat Williams	CANTON TOWNSHIP
Robert A. Blum II	CANTON TWP.
Al Selmi	RED FORD TWP.
Stephen J. Kushi	Village of Almont.
Paul Mondow	City of Farmington Hills
Ed Queen	CITY OF WAYNE
Paul E. Mith II	SHELBY TOWNSHIP
Nicole Delaj's	Hubbell, Roth & Clark, Inc.
Mark Michely	NOCWA
Marina Scott	Fishbeck, Thompson, Carr & Huber
Ben G. Hill	CE Raine Co.
Loyd	city of Allen park
Glenn Kozin	city of Taylor.
James Greenahan	ENGINEERING Society of Detroit
Cheryl	City of Farmington
D. S. C. Hill	CHARTER TOWNSHIP OF HARRISON



September 28, 2017 – One Water Partnering Agreement

NAME	ORGANIZATION
Joe F. 111° Council	GLWA
Jeff K. Keller	Socwa
Nikki Botson	GLWA
Suzanne Coffey	GLWA
Jim. Price	Oakland County
Jim J. Cury	GLWA
Jim J. Cury	Van Buren Township
1-1-17	CITY OF INGLAY CITY
1-1-17	City of Detroit/DWSD
1-1-17	Northville Township
1-1-17	CANTON TWP.
1-1-17	CITY OF WARREN
1-1-17	DEARBORN
1-1-17	City of Livonia
1-1-17	Shelly Twp DPW
1-1-17	Westland
1-1-17	Applied Science, Inc.
1-1-17	Browns town Twp.

## September 28, 2017 – One Water Partnering Agreement

[illegible]