

A dynamic splash of clear blue water against a white background, with various droplets and streams of water captured in motion. The water is bright blue and highly reflective.

Highlighted Field Services and Systems Control Projects

Todd King, P.E., BCEE

Director of Field Services



Highlighted SCC and Field Projects

DB-226 Detroit River Intercept Rehab – CIP 222002

*DB-150 Springwell, Northeast and Pennsylvania Raw Water Tunnel
Rehab – CIP 116002*

CS-120 Conner and Freud Pump Station Design – CIP 232002





GLWA
Great Lakes Water Authority

**Contract DB 226:
Rehabilitation of
Detroit River
Interceptor**

Project Manager

Mini Panicker



CIP 222002 Related Contracts

Contract	Contractor	Contract Amount	Earned Value	% Complete	Start	End	% Elapsed Time
DB-226	Jay Dee	\$47,993,835	\$33,790,547	70%	5/24/18	5/24/23	70%

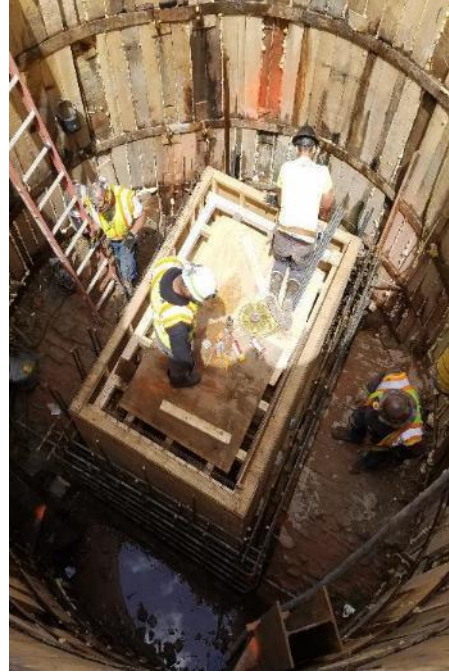
- Currently, negotiating GMP for Reach 3 – Approximately \$30 million and two-year extension
- Total cost expected to be \$80 million +/- in alignment with FY22-26 CIP

Detroit River Interceptor (DRI)

- 13 miles long from Alter Rd. to WRRF
- Interceptor diameter ranges from 8 ft near Alter Rd to 16 ft at WRRF
- DRI was constructed in parallel to the Detroit River



CONNOR CREEK ACCESS STRUCTURE CONSTRUCTION



SEWER REPAIRS



NIEA "GRAND CONNECTOR"



NIEA “GRAND CONNECTOR” STATUS



- North Shaft excavation started 8-10-2020
- North Shaft Concrete mud mat was placed on 9-3-2020
- Structures and Gates completed summer 2021